

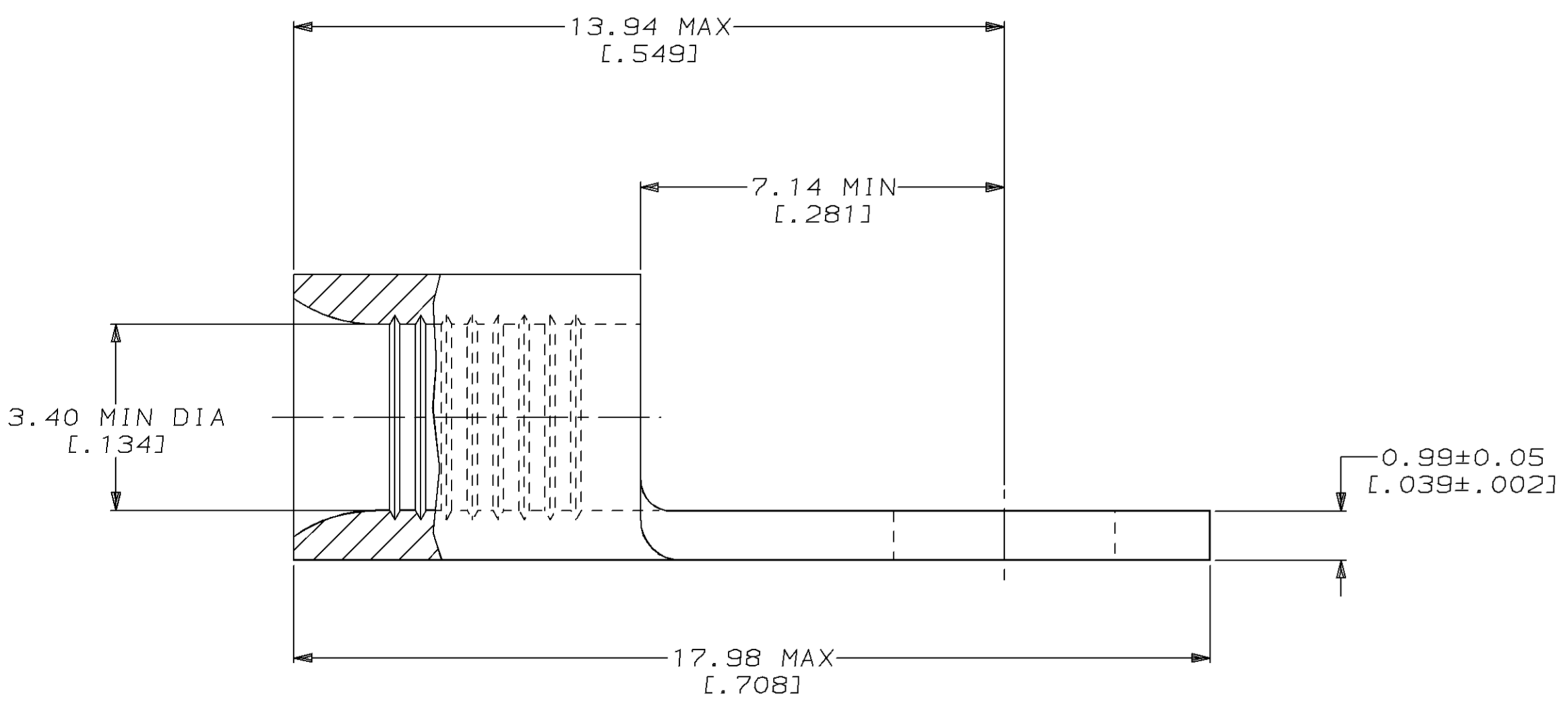
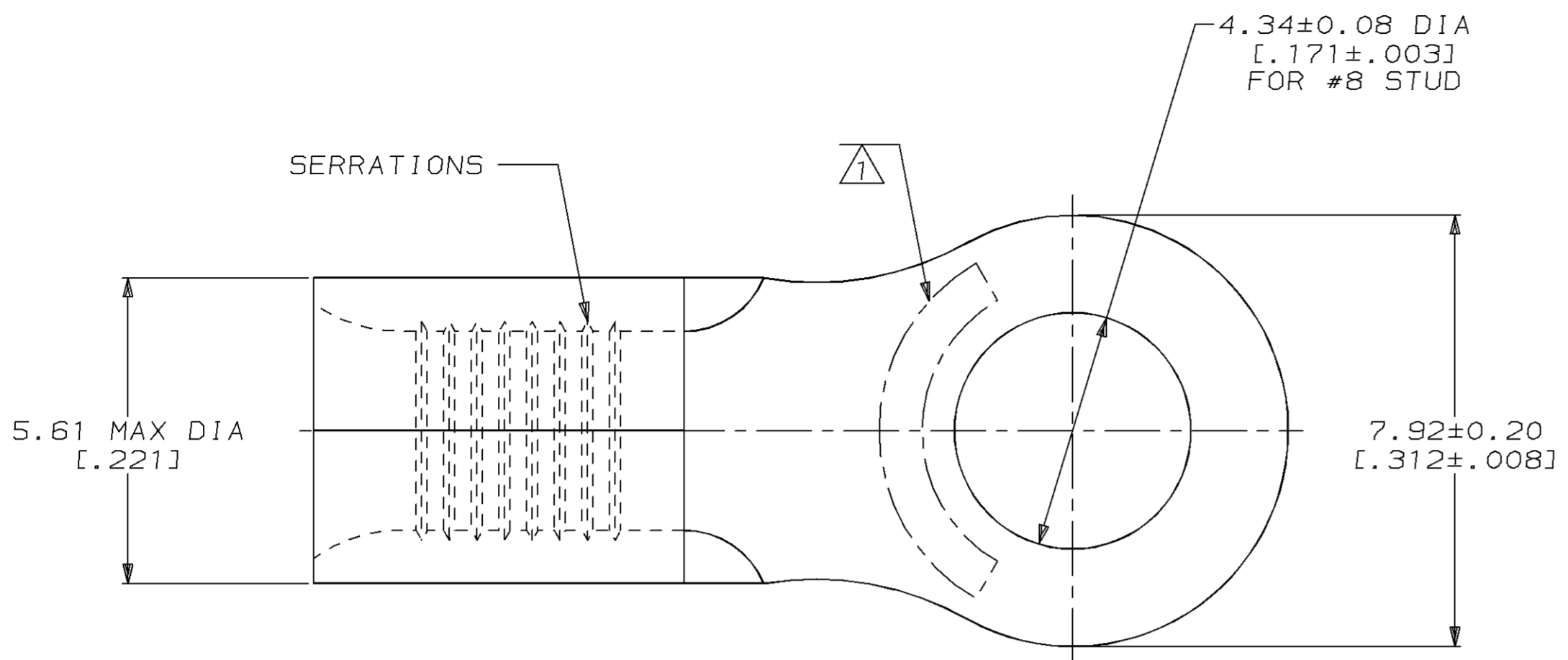
THIS DRAWING IS UNPUBLISHED. RELEASED FOR PUBLICATION, 19 .  
 © COPYRIGHT 19 BY AMP INCORPORATED. ALL INTERNATIONAL RIGHTS RESERVED.

| LOC | DIST | P | F | ZONE | LTR | DESCRIPTION              | DATE    | APPD   |
|-----|------|---|---|------|-----|--------------------------|---------|--------|
| G   | 14   |   |   |      |     | REVISED PER 0720-0937-96 | 05JUN96 | OK MJS |

**METRIC**  
 DIMENSIONS LISTED IN mm [ INCHES ]

|                          |                           |
|--------------------------|---------------------------|
| <b>AMP</b><br>WIRE RANGE | E13288<br>Listed          |
| 12-10 AWG<br>STRANDED    | 12-10 AWG<br>STRANDED     |
| LR7189<br>Certified      | MILITARY P/N<br>AND CLASS |
| NOT<br>CERTIFIED         | NOT APPLICABLE            |

STAMP AMP 12-10\* APPROX AS SHOWN



| QUANTITY | PACKAGE TYPE     | PART NO   |
|----------|------------------|-----------|
| 50       | LOOSE PIECE, BOX | 8-34404-2 |
| -        | LOOSE PIECE      | 34404     |

**AMP INCORPORATED**  
**CUSTOMER SERVICE SYSTEMS**

|                                                                                  |                                              |
|----------------------------------------------------------------------------------|----------------------------------------------|
| FOR ADDITIONAL PRODUCT INFORMATION OR COPIES OF DRAWINGS AND TECHNICAL DOCUMENTS | PRODUCT INFORMATION CENTER<br>1-800-522-6752 |
| FOR APPLICATION TOOLING INFORMATION                                              | TOOLING ASSISTANCE CENTER<br>1-800-722-1111  |
| FOR ORDER ENTRY                                                                  | 1-800-526-5142                               |

MAX RECOMMENDED OPERATING TEMPERATURE:  
 170°C MAX

VOLTAGE RATING:  
 NOT APPLICABLE

WIRE CROSS SECTIONAL AREA RANGE:  
 2.62-6.64mm<sup>2</sup> [5,180-13,100] CIR MILS  
 STRANDED

THIS DRAWING IS A CONTROLLED DOCUMENT FOR AMP INCORPORATED. IT IS SUBJECT TO CHANGE AND THE CONTROLLING ENGINEERING ORGANIZATION SHOULD BE CONTACTED FOR THE LATEST REVISION.

DO NOT SCALE PRINT. UNLESS SPECIFIED DIMENSIONS IN mm [INCHES]— TOLERANCES ON :  
 2 PLC DEC ± -  
 3 PLC DEC ± -  
 ANGLES ± -

MATERIAL  
 COPPER PER ASTM B-152 ANNEALED

FINISH  
 TIN PLATE 0.00254 [0.00100] MIN THK PER MIL-T-10727

DR 2-8-93  
 TA BRINKMAN

CHK 2-8-93  
 DA PATTERSON

APPD 2-8-93  
 DE MILLER

APPD 2-8-93  
 JL MECKLEY

PRODUCT SPEC  
 -

APPLICATION SPEC  
 -

WEIGHT  
 -

**AMP** AMP Incorporated  
 Harrisburg, PA 17105-3608

NAME  
**TERMINAL, RING TONGUE, BUDGET**

|               |                    |                       |
|---------------|--------------------|-----------------------|
| SIZE<br>C     | CAGE CODE<br>00779 | DRAWING NO<br>G-34404 |
| SCALE<br>10:1 | SHEET<br>1 OF 1    |                       |